



ENCLOSURES
& ENGINEERING



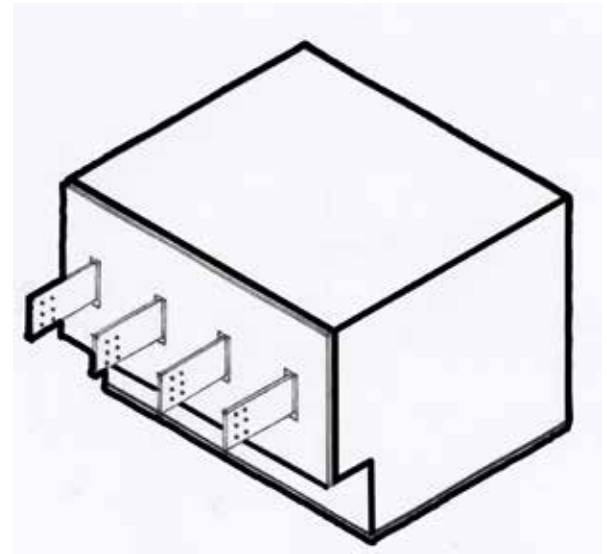
Serving our industry proudly for 55 years!

Standard Sizes

WxHxD	Amps	Item No.
48x36x44	2,500	N32500AATXCB483644
48x36x44	3,000	N33000AATXCB483644
48x36x44	4,000	N34000AATXCB483644
48x36x44	5,000	N35000AATXCB483644
48x36x44	6,000	N36000AATXCB483644

Note: Minimum of 10 lug spaces provided on Customer side.

NOTE: All Bussed Products require an EPI engineering drawing engineering drawing when placing an order.



NEMA 3R Austin Collection Box

Construction

EPI Austin Collection Box is framed with a 1 1/2" x 1 1/2" angle iron. All seams are continuously welded. Exterior walls are made of 12ga Sheet Steel. Bracing is made of 12ga Steel and is rated for 100,000 AIC to receive Phase and Neutral Bars on minimum 3" 600V insulators. The enclosure is primed and painted both inside and out with Sherwin Williams ANSI-70 Light-Dove Gray. Available in Aluminum and Stainless Steel.

A 1/2" thick GPO-3 red insulating material is used to provide protection.

Buss Bars

C110 Silver Plated Copper is used on all Phase bars, Neutral and Ground bars where applicable. Bars are continuously punched with 9/16" holes at 1 3/4" each way.

Ampacity

Phase and Neutral Bars are sized to N.E.C. article 374,374-6 according to the following formula: One square inch of copper cross section equals 1,000 amps per phase. The Neutral phase is supplied "Full" not half.

Industry Standard

Meets NEMA standard for Type 3R (Rainproof and sleet-ice resistant) enclosures. Approved by Austin Energy.